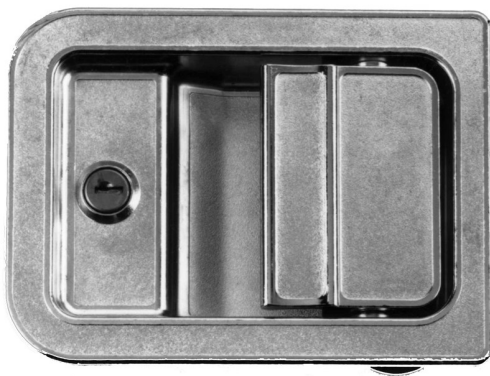


030-0300 Entrance Door Hardware Set



DESIGNED FOR:

- On-highway entrance door applications

FEATURES/BENEFITS:

- Inside lock provides override if outside paddle should be locked
- Inside "L" handle provides door closure feature
- Manually operated safety dead bolt
- Two rotor - two stage rotary door latch with primary and secondary latching positions

Global Locations:

TriMark Corporation
500 Bailey Avenue
P.O. Box 350
New Hampton, Iowa 50659
United States
Tel: 641-394-3188
Fax: 641-394-2392
1-800-447-0343
www.trimarkcorp.com

TriMark Europe
Cedar Court
Walker road
Bardon Hill
Coalville LE67 1TU
United Kingdom
Tel: +44(0)1530 512460
Fax: +44(0)1530 512461
www.trimarkeu.com

TriMark (Xuzhou)
Building A5 Jingwu Road
Xuzhou Economic
Development Zone
Xuzhou, Jiangsu
221004 PR China
Tel: +86 516 8773 0018
Fax: +86 516 8773 0058
www.trimarkcn.com



TriMark. Interactive. Product. Selector



TriMark



TriMark Corporation

AVAILABLE:

- Keyed random
- Right or left hand configurations (right hand shown)

INSTALLATION:

- (3) #10-24 UNC mounting screws (included)
- (4) 1/4-20 UNC mounting fasteners (included)

MATERIAL:

- Exterior housing and paddle, interior cover plate and "L" handle: die cast zinc alloy
- Rotors: heat treated, smooth edge stamped steel

FINISH:

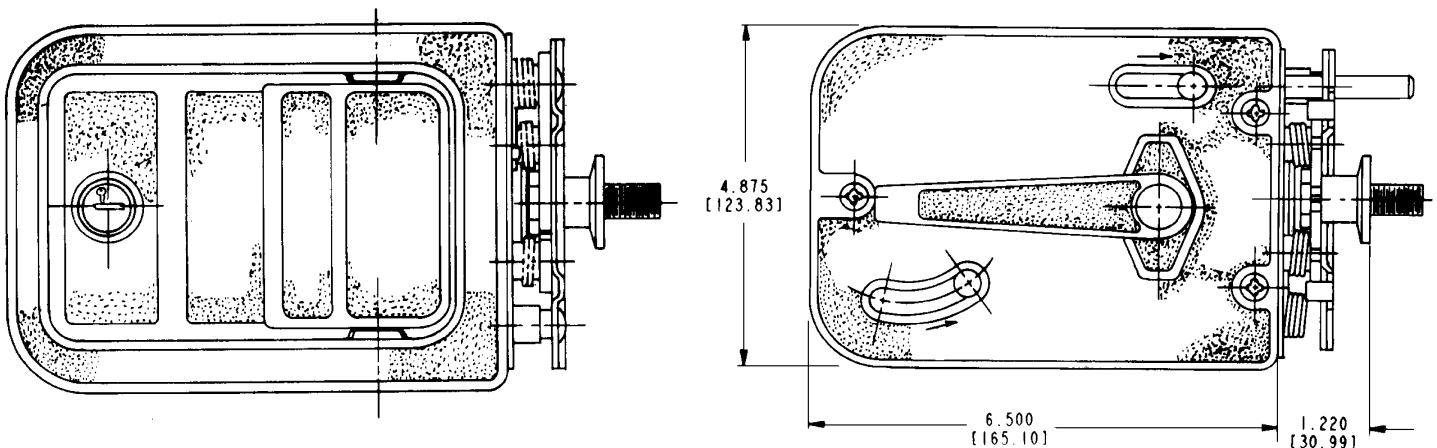
- Copper-nickel-chrome plated
- Black powder coated

INTERNAL LUBRICATION:

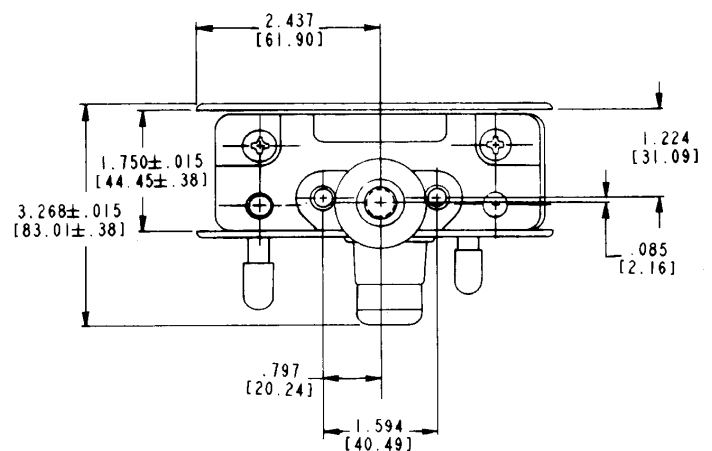
- Oven-cured dry lubricant is applied at factory on all critical moving parts
- Additional lubrication to be applied in the field if required.

Individual part dimensions are for reference only. Refer to individual part drawings for complete dimensions, specifications, and installation procedures. Engineering assistance and application drawings are available.

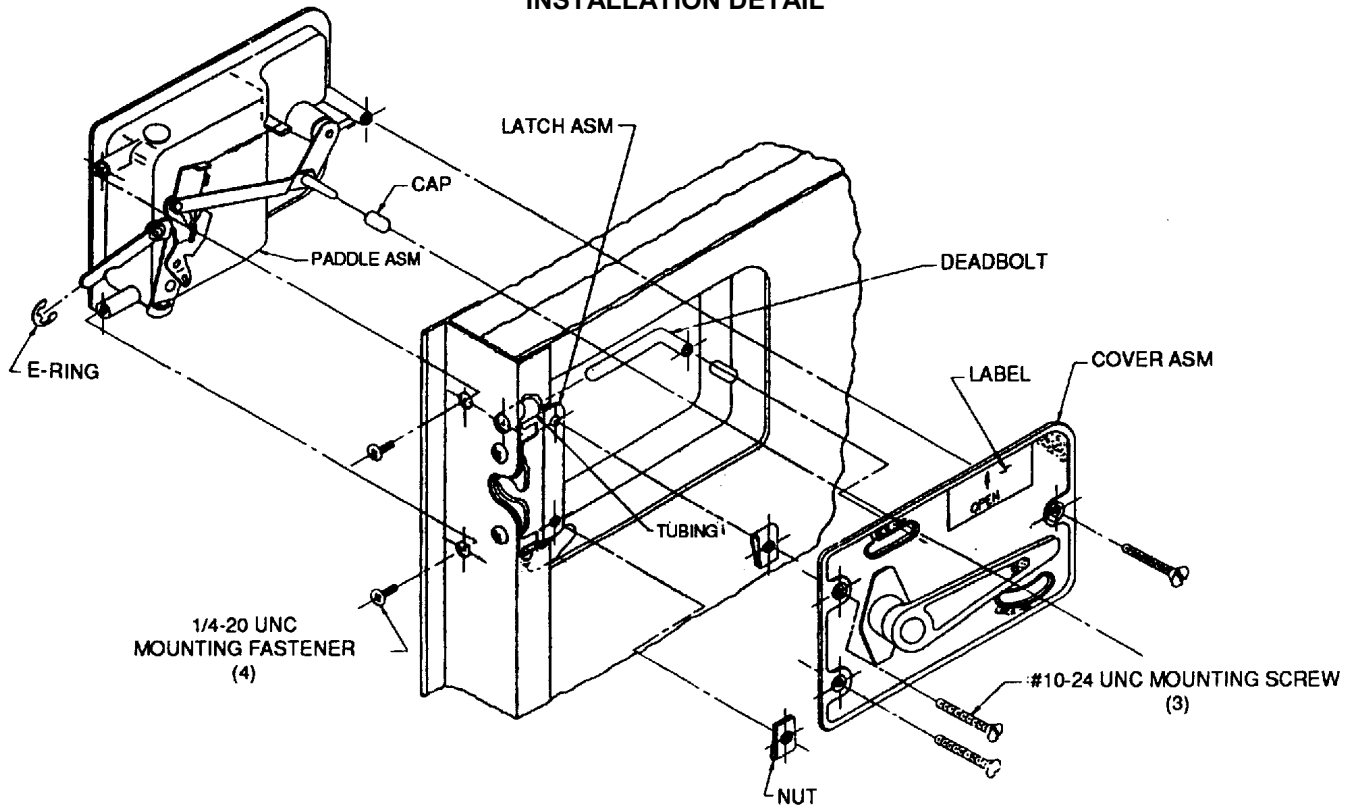
For more information visit
www.trimarkcorp.com



CAUTION: Applications of this system may fall within the requirements of FMVSS 206 (ECE R11) and SAE J839 safety standards. These safety related requirements are dependent on door application, e.g. front and rear hinged doors, sliding doors, or hinged upward swinging doors. The entire door hardware system must be included in the design/analysis process latch, handle, lock mechanism, cables/rods/linkages, fasteners, hinges, etc. This ensures compatibility of all components within the hardware system. If FMVSS 206 (ECE R11) is a requirement, then all of the components within the door system must comply with strength, inertia and locking requirements as specified within the Standard. Note that this product complies with FMVSS 206 (ECE R11) when tested in accordance with SAE J839 and that this system meets FMVSS 206 (ECE R11) loads and locking requirements and may be used in FMVSS 206 (ECE R11) applications pending TriMark application approval.



INSTALLATION DETAIL



RECOMMENDED DOOR CUT-OUT DETAIL

